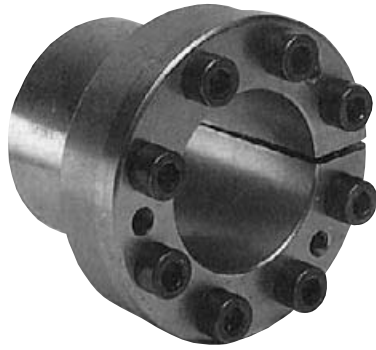
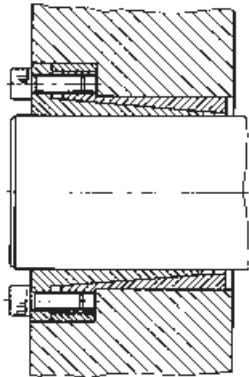


Clamping Elements Type ACE 81



Available for shaft diameters down to 11mm, these shaft clamping elements are designed to fit into very small diameter hubs, being particularly suited to Timing pulley and overload clutch applications. A spacer ring prevents axial movement during clamping; and design ensures good levels of concentricity. For correct operation of these units, the hub diameter should not be less than the flange diameter D_2 , even though with many materials stress limits would allow selection of smaller hub diameters.

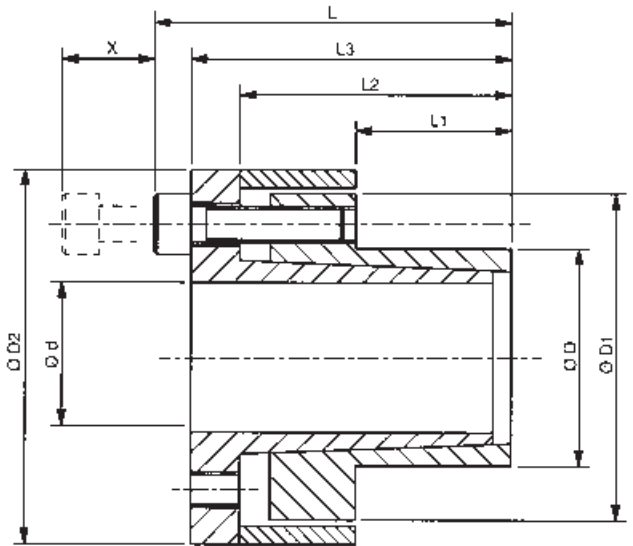


Recommended tolerances for full torque transmission are:-

Shaft h8
Hub H8

Clamping surfaces to be finished to $Rz \leq 15 \mu\text{m}$.

X = Distance required to remove screws, additional clearance for alan key may be required.



Dimensions

Part No.	Dimensions mm									Torque Cap. M Nm	Axial Force F kN	Surface Pressure		Clamping Screws		Approx Weight kg	Min. Hub Dia* mm		
	d	D	D ₁	D ₂	L	L ₁	L ₂	L ₃	X			Shaft Ps N/mm ²	Hub Ph N/mm ²	Size	Torque Nm		Assy Type A	Assy Type B	Assy Type C
ACE81-10x26	10	26	37.5	40.5	31.5	14	22.5	27.5	12	45	9.0	260	100	M4	5	0.22	36	34	32
ACE81-11x26	11	26	37.5	40.5	31.5	14	22.5	27.5	12	50	9.1	236	100	M4	5	0.22	36	34	32
ACE81-12x26	12	26	37.5	40.5	31.5	14	22.5	27.5	12	54	9.0	217	100	M4	5	0.22	36	34	32
ACE81-14x26	14	26	37.5	40.5	31.5	14	22.5	27.5	12	90	14.5	186	100	M4	5	0.22	36	34	32
ACE81-15x26	15	26	37.5	40.5	31.5	14	22.5	27.5	12	109	14.5	173	100	M4	5	0.22	36	34	32
ACE81-16x26	16	26	37.5	40.5	31.5	14	22.5	27.5	12	116	14.5	163	100	M4	5	0.22	36	34	32
ACE81-18x26	18	26	37.5	40.5	31.5	14	22.5	27.5	12	130	14.5	144	100	M4	5	0.22	36	34	32
ACE81-19x26	19	26	37.5	40.5	31.5	14	22.5	27.5	12	138	14.5	137	100	M4	5	0.22	36	34	32
ACE81-20x26	20	26	37.5	40.5	31.5	14	22.5	27.5	12	145	14.5	130	100	M4	5	0.22	36	34	32
ACE81-19x38	19	38	53.0	57.0	39	14	26	33	18	205	22	208	104	M6	17	0.32	54	50	47
ACE81-20x38	20	38	53.0	57.0	39	14	26	33	18	215	22	198	104	M6	17	0.32	54	50	47
ACE81-22x38	22	38	53.0	57.0	39	14	26	33	18	240	22	180	104	M6	17	0.32	54	50	47
ACE81-24x38	24	38	53.0	57.0	39	14	26	33	18	265	22	165	104	M6	17	0.32	54	50	47
ACE81-25x38	25	38	53.0	57.0	39	14	26	33	18	276	22	158	104	M6	17	0.32	54	50	47
ACE81-28x38	28	38	53.0	57.0	39	14	26	33	18	309	22	141	104	M6	17	0.32	54	50	47
ACE81-30x38	30	38	53.0	57.0	39	14	26	33	18	331	22	132	104	M6	17	0.32	54	50	47
ACE81-19x38H	19	38	53.0	57.0	52	27	39	46	18	314	33	162	81	M6	17	0.40	50	47	45
ACE81-20x38H	20	38	53.0	57.0	52	27	39	46	18	331	33	154	81	M6	17	0.40	50	47	45
ACE81-22x38H	22	38	53.0	57.0	52	27	39	46	18	364	33	140	81	M6	17	0.40	50	47	45
ACE81-24x38H	24	38	53.0	57.0	52	27	39	46	18	397	33	128	81	M6	17	0.40	50	47	45
ACE81-25x38H	25	38	53.0	57.0	52	27	39	46	18	413	33	123	81	M6	17	0.40	50	47	45
ACE81-28x38H	28	38	53.0	57.0	52	27	39	46	18	465	33	110	81	M6	17	0.40	50	47	45
ACE81-30x38H	30	38	53.0	57.0	52	27	39	46	18	497	33	103	81	M6	17	0.40	50	47	45
ACE81-24x52	24	52	66.5	70.5	52	27	39	46	18	529	44	171	79	M6	17	0.60	67	64	61
ACE81-25x52	25	52	66.5	70.5	52	27	39	46	18	552	44	164	79	M6	17	0.60	67	64	61
ACE81-28x52	28	52	66.5	70.5	52	27	39	46	18	618	44	147	79	M6	17	0.60	67	64	61
ACE81-30x52	30	52	66.5	70.5	52	27	39	46	18	662	44	137	79	M6	17	0.60	67	64	61
ACE81-32x52	32	52	66.5	70.5	52	27	39	46	18	706	44	128	79	M6	17	0.60	67	64	61
ACE81-35x52	35	52	66.5	70.5	52	27	39	46	18	772	44	117	79	M6	17	0.60	67	64	61
ACE81-38x52	38	52	66.5	70.5	52	27	39	46	18	839	44	108	79	M6	17	0.60	67	64	61
ACE81-40x52	40	52	66.5	70.5	52	27	39	46	18	883	44	103	79	M6	17	0.60	67	64	61
ACE81-42x52	42	52	66.5	70.5	52	27	39	46	18	926	44	98	79	M6	17	0.60	67	64	61
ACE81-28x72	28	72	91.5	96.5	68	37	52	60	22	1462	104	255	99	M8	41	1.50	100	93	87
ACE81-30x72	30	72	91.5	96.5	68	37	52	60	22	1567	104	238	99	M8	41	1.50	100	93	87
ACE81-32x72	32	72	91.5	96.5	68	37	52	60	22	1671	104	223	99	M8	41	1.50	100	93	87
ACE81-35x72	35	72	91.5	96.5	68	37	52	60	22	1828	104	204	99	M8	41	1.50	100	93	87
ACE81-38x72	38	72	91.5	96.5	68	37	52	60	22	1985	104	188	99	M8	41	1.50	100	93	87
ACE81-40x72	40	72	91.5	96.5	68	37	52	60	22	2089	104	178	99	M8	41	1.50	100	93	87
ACE81-42x72	42	72	91.5	96.5	68	37	52	60	22	2194	104	170	99	M8	41	1.50	100	93	87
ACE81-45x72	45	72	91.5	96.5	68	37	52	60	22	2350	104	158	99	M8	41	1.50	100	93	87
ACE81-48x72	48	72	91.5	96.5	68	37	52	60	22	2506	104	149	99	M8	41	1.50	100	93	87
ACE81-50x72	50	72	91.5	96.5	68	37	52	60	22	2611	104	143	99	M8	41	1.50	100	93	87
ACE81-55x72	55	72	91.5	96.5	68	37	52	60	22	2872	104	130	99	M8	41	1.50	100	93	87
ACE81-60x72	60	72	91.5	96.5	68	37	52	60	22	3133	104	119	99	M8	41	1.50	100	93	87

For the unit to function correctly hub diameter should not be less than the flange outside diameter D_2 .
 *Minimum outside diameter of hubs manufactured in medium carbon steels with yield strength $\geq 320 \text{ N/mm}^2$.
 For hub types, and other materials, refer to page 3.
 For assembly and disassembly instructions refer to page 24.

Tel: +44 121 360 0155 Fax: +44 121 325 1079 Email: sales@crossmorse.com